

East Quarter corner Section 14, Township 12 North, Range 70 West

CERTIFIED LAND CORNER RECORDATION

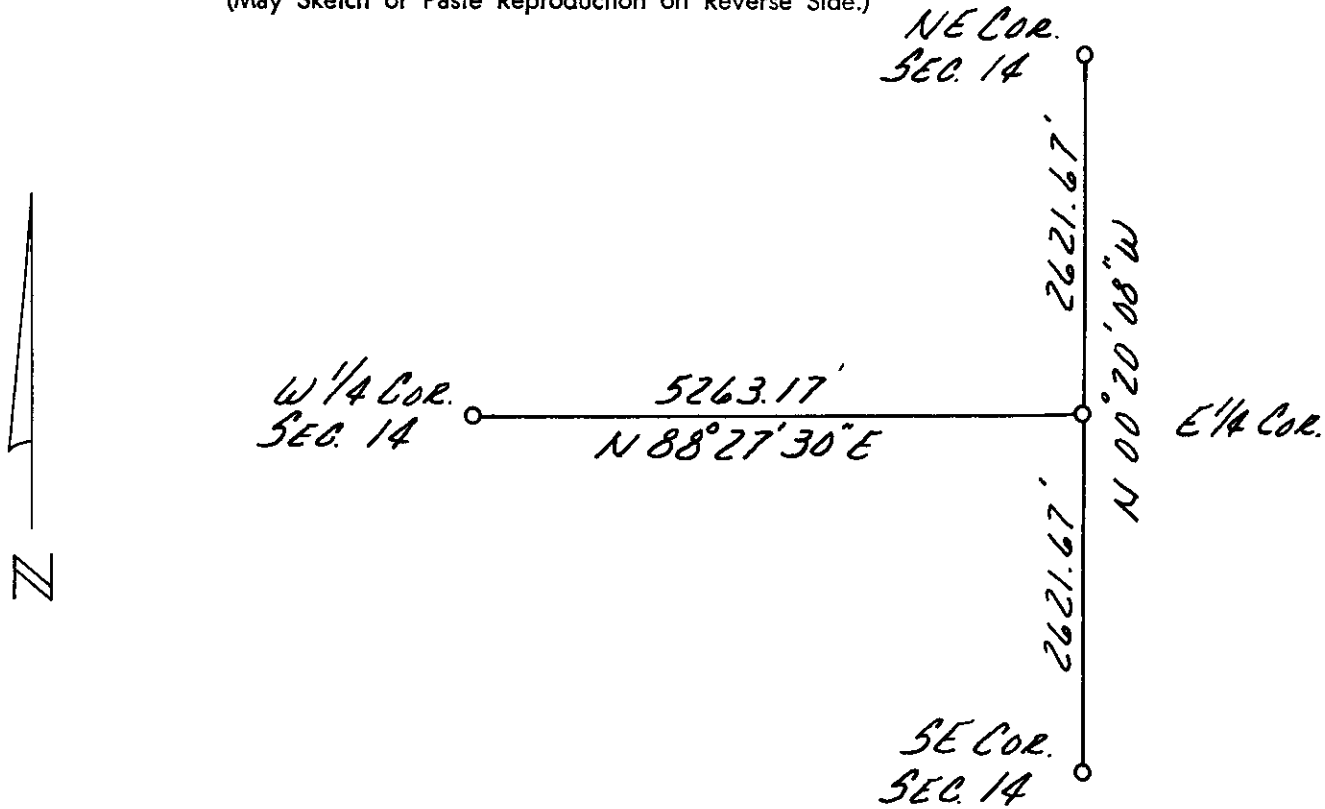
DESCRIPTION OF CORNER EVIDENCE FOUND, AND ORIGINAL RECORD (If known)

Found no evidence at this corner set on a straight line between Northeast corner and Southeast corner at the mid point this point at an angle point in North - South fence line
Original corner-stone 30" x 14" x 4", set in mound, with 1/4 marked on West side

DESCRIPTION OF MONUMENT AND ACCESSORIES ESTABLISHED TO PERPETUATE THE ORIGINAL LOCATION OF THIS CORNER:

Set 5/8 inch copper rod with 1 1/2 inch copper cap stamped P.E. & L.S. 692
From corner to ties
North 33.10 feet to steel fence post
East 2.20 feet to nail and flagging in fence post at angle point
South 43.75 feet to nail and flagging in fence post at angle point

SKETCH, WITH COURSE AND DISTANCE TO ADJACENT CORNER IF DETERMINED IN THIS SURVEY.
(May Sketch or Paste Reproduction on Reverse Side.)



I, Neil M. Kruback certify that I have carefully performed or reviewed the work done on the diagrammed corner as reported on this recordation form and approve the same.

Neil M. Kruback
Signature of Surveyor

692
Registration No.

STATE OF WYOMING,
Office of Clerk and Recorder,
County of _____

This "corner record" was filed for record on the 18 day of December, 19 73, was noted on the cross-index plat and is assigned page No. _____, in book No. _____.

John B. Husman
County Official

| | | | | | | |
|-----------------|------|----|----|----|----------|------|
| Cross Index No. | L-21 | T. | 12 | R. | 70W 6thP | Mer. |
| | | T. | | R. | | Mer. |
| | | T. | | R. | | Mer. |
| | | T. | | R. | | Mer. |
| | | T. | | R. | | Mer. |
| | | T. | | R. | | Mer. |
| | | T. | | R. | | Mer. |

Photographed

Indexed

Posted

Assessor

This instrument was filed to record
 at 1127
 18
 A.D. 1973
 Book

[Signature]

County Clerk
 by *[Signature]*